

PROPOSED BUILDING BEYOND

ADJACENT BUILDING

10'

ALLEY



5TH ST.

925 HOTEL  
SHEET 109

NORTH ELEVATION

SCALE: 1/16" = 1'-0"

DATE: 01-26-2019

Board of Zoning Adjustment

District of Columbia

CASE NO.19722

EXHIBIT NO.9A2

FILLAT+  
ARCHITECTURE

Board of Zoning Adjustment  
District of Columbia  
CASE NO.19722  
EXHIBIT NO.9A2

© Copyright 2016, FILLAT + ARCHITECTURE. All rights reserved.



925 5TH ST. HOTEL  
SHEET | A020

SOUTH ELEVATION

SCALE: 1/16" = 1'-0"  
DATE: 01.26.2018

**FILLAT+**  
ARCHITECTURE



VIEW NORTH DOWN 5TH STREET (15' HEIGHT)

925 5TH ST., HOTEL  
SHEET | A021

MODEL VIEW

SCALE: NTS  
DATE: 01.26.2018

**FILLAT+**  
ARCHITECTURE



VIEW FROM EAST K STREET (20' HEIGHT)

925 5TH ST. HOTEL  
SHEET | A022

MODEL VIEW

SCALE: NTS  
DATE: 01.26.2018

**FILLAT+**  
ARCHITECTURE



VIEW NORTH DOWN 5TH STREET (PEDESTRIAN HEIGHT)

925 5TH ST. HOTEL  
SHEET | A023

MODEL VIEW

SCALE: NTS  
DATE: 01.26.2018

**FILLAT+**  
ARCHITECTURE



VIEW FROM WEST K STREET (30' HEIGHT)

925 5TH ST. HOTEL  
SHEET | A024

MODEL VIEW

SCALE: NTS  
DATE: 01.26.2018

**FILLAT+**  
ARCHITECTURE



VIEW FROM EAST K STREET (30' HEIGHT)

925 5TH ST. HOTEL  
SHEET | A025

MODEL VIEW

SCALE: NTS  
DATE: 01.26.2018

**FILLAT+**  
ARCHITECTURE

© Copyright 2016, FILLAT + ARCHITECTURE. All rights reserved.



VIEW SOUTH DOWN 5TH STREET (PEDESTRIAN HEIGHT)

925 5TH ST. HOTEL  
SHEET | A026

MODEL VIEW

SCALE: NTS  
DATE: 01.26.2018

**FILLAT+**  
ARCHITECTURE





VIEW NORTH DOWN 5TH STREET (PEDESTRIAN HEIGHT)

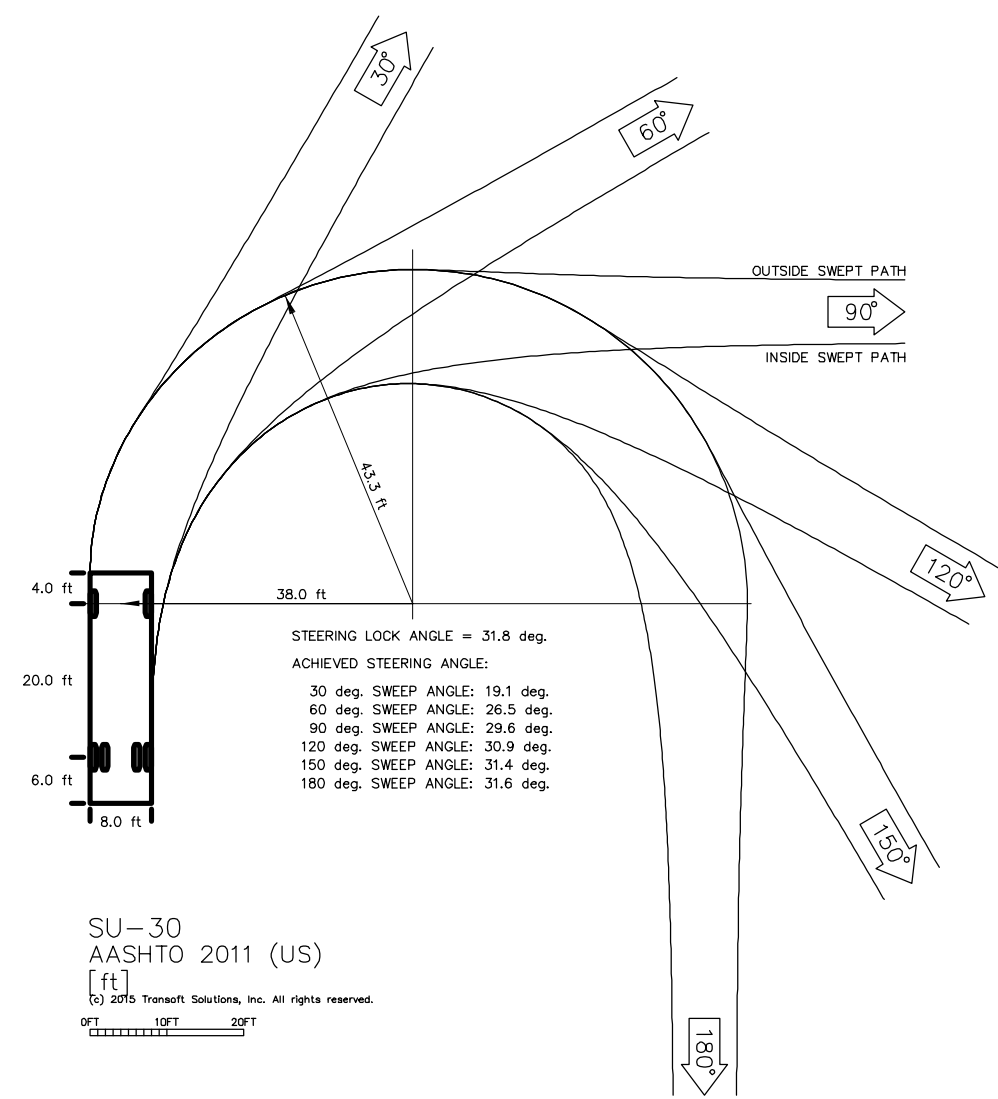
925 5TH ST. HOTEL  
SHEET | A027

MODEL VIEW

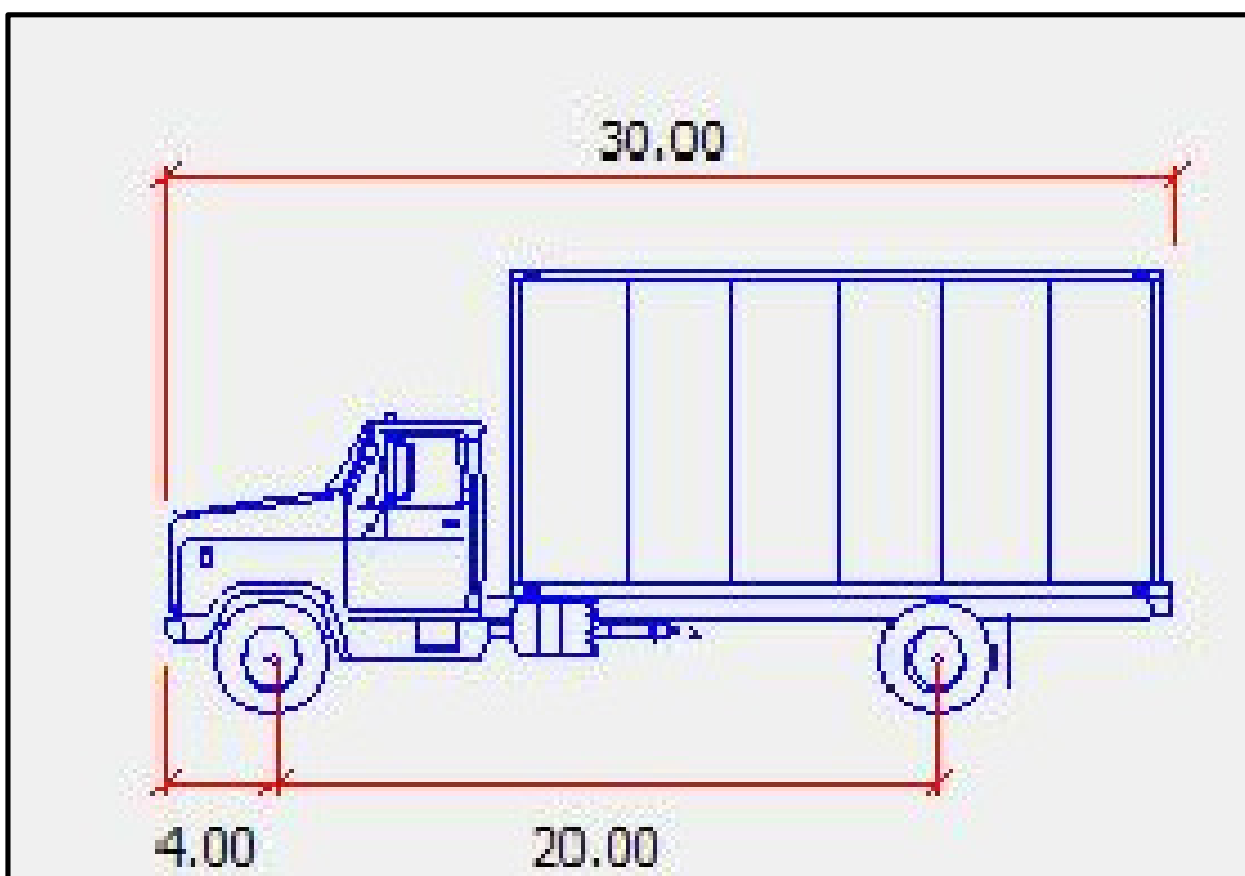
SCALE: NTS

DATE: 01.26.2018

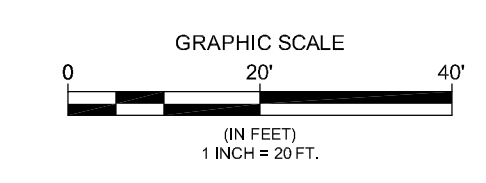
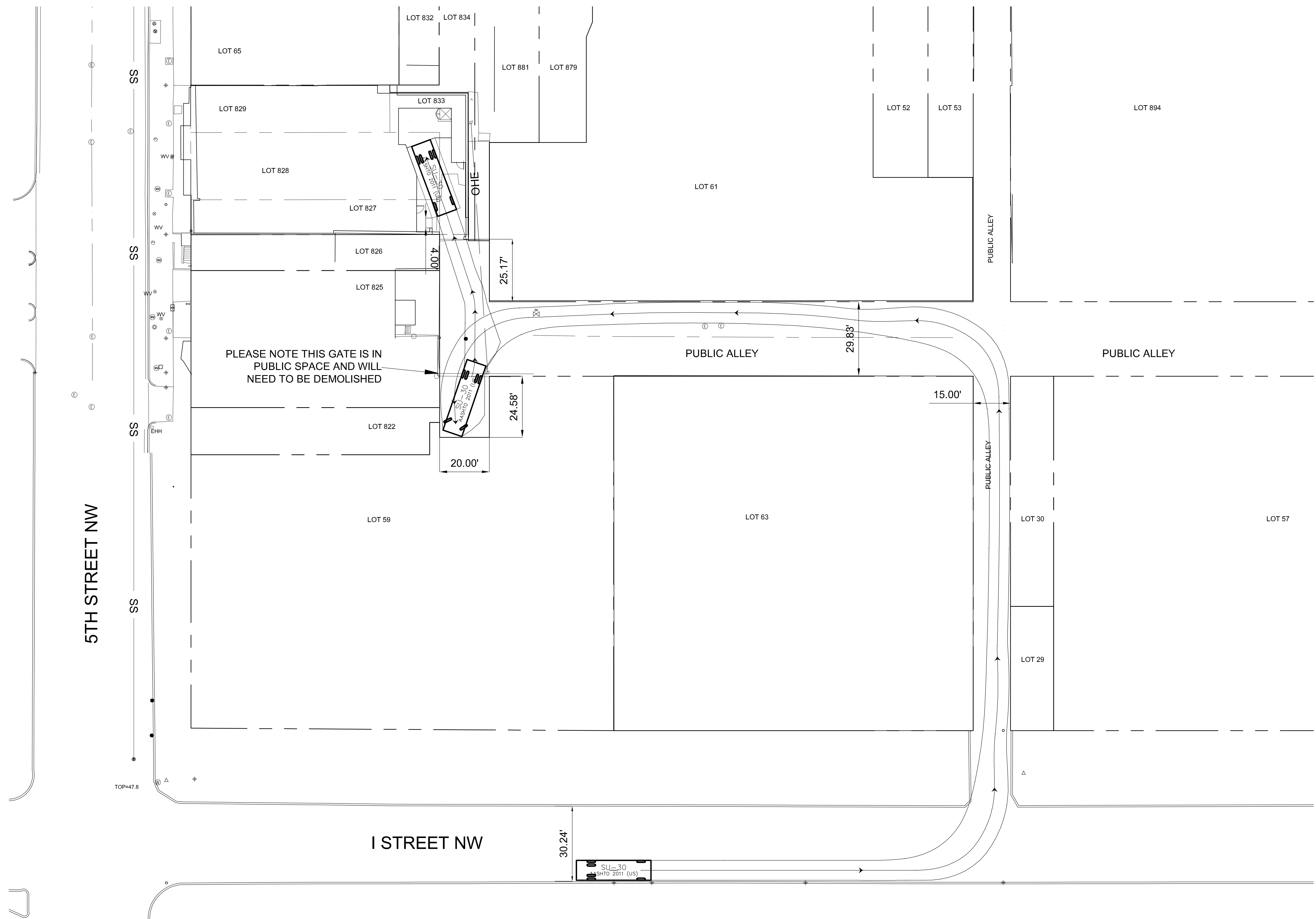
**FILLAT+**  
ARCHITECTURE



SU-30  
AASHTO 2011 (US)  
[ft.]  
© 2015 Transoft Solutions, Inc. All rights reserved.



SU-30  
WIDTH: 8'  
TRACK: 8'  
STEERING ANGLE: 31.8



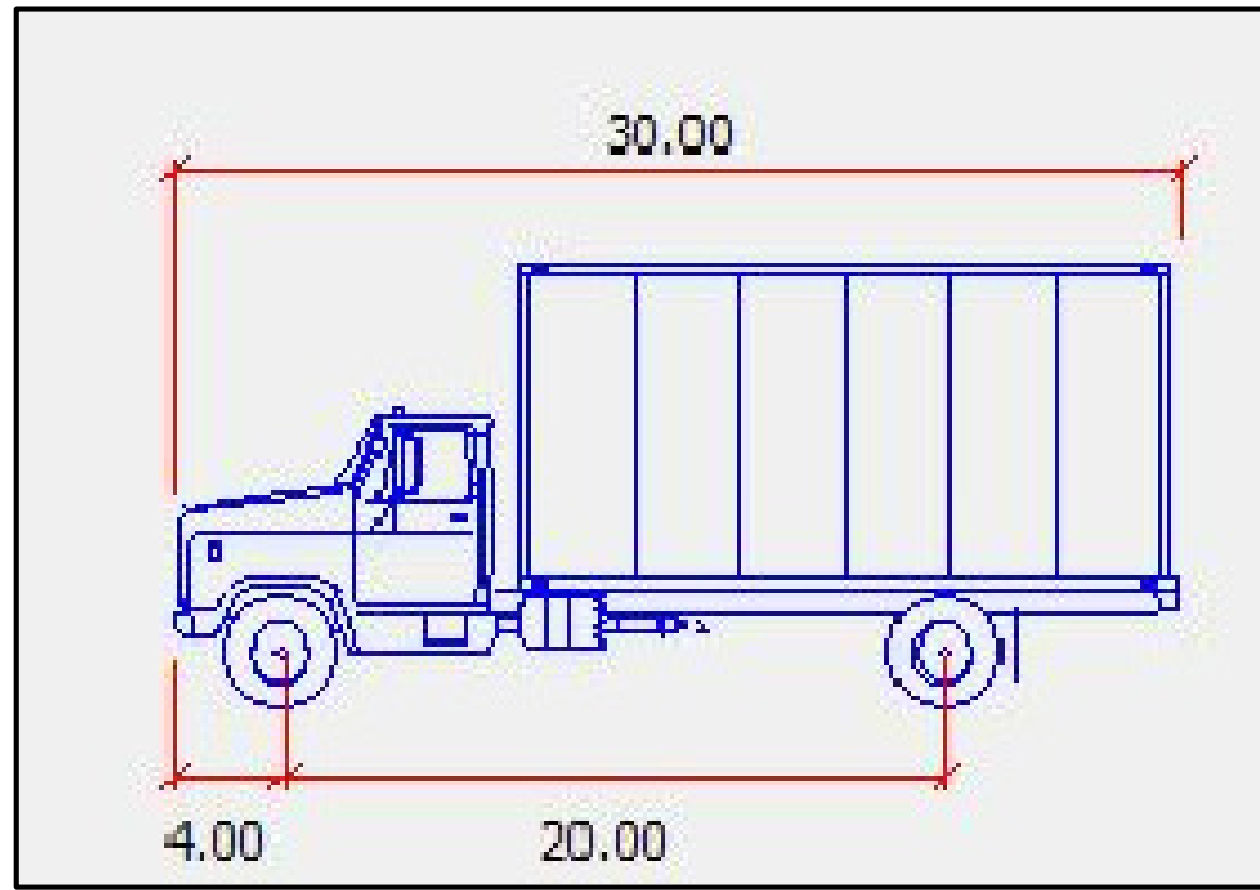
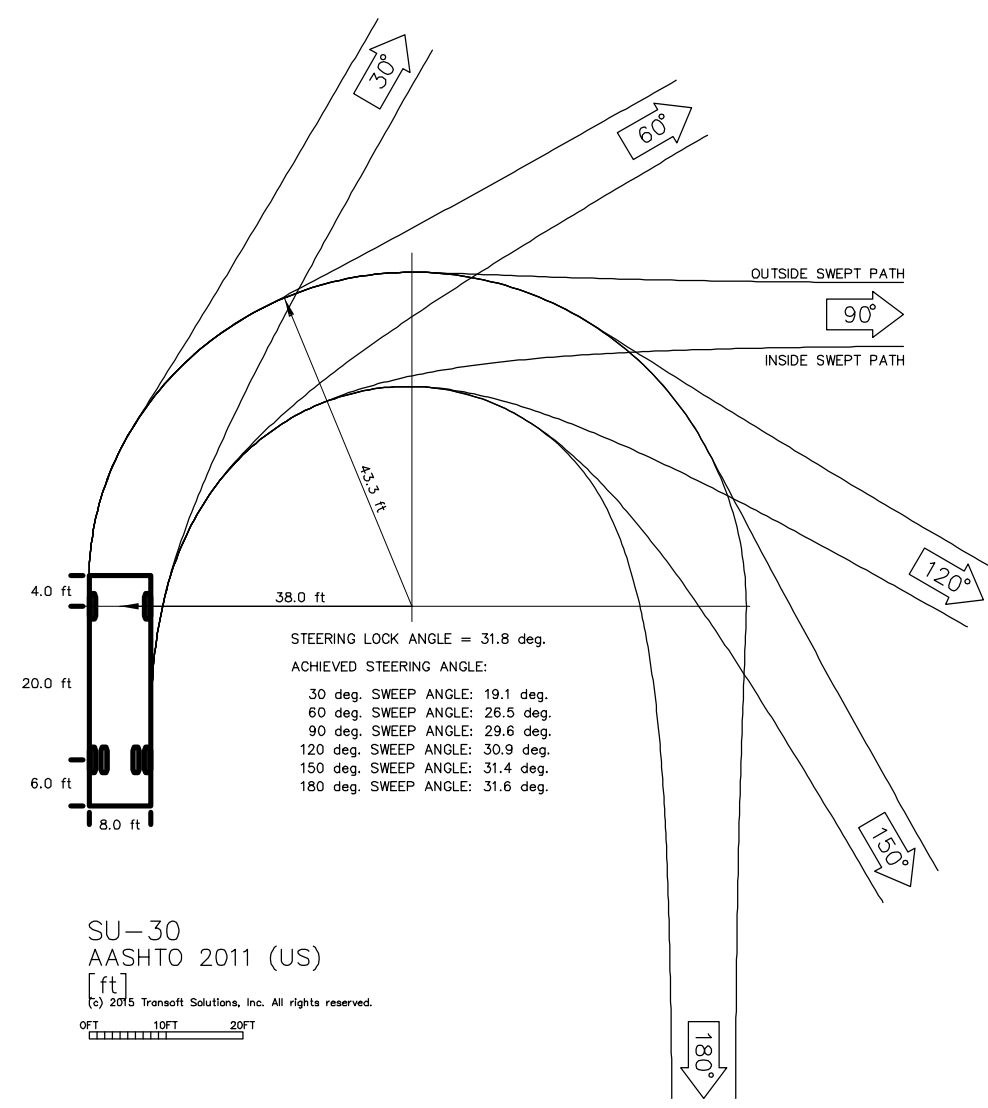
NO.	DATE	SUBMITTALS/REVISIONS	BY

Civil Engineer  
**Dewberry**  
 2101 Galther Road, Suite 340  
 Rockville Maryland 20850  
 Phone: (301) 337-2851 FAX: (301) 258-7607  
 Contact: C. Peter Okafor, PE, Associate Vice President

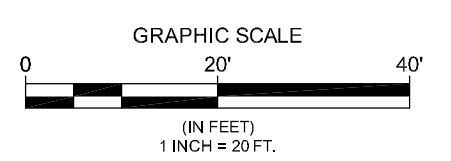
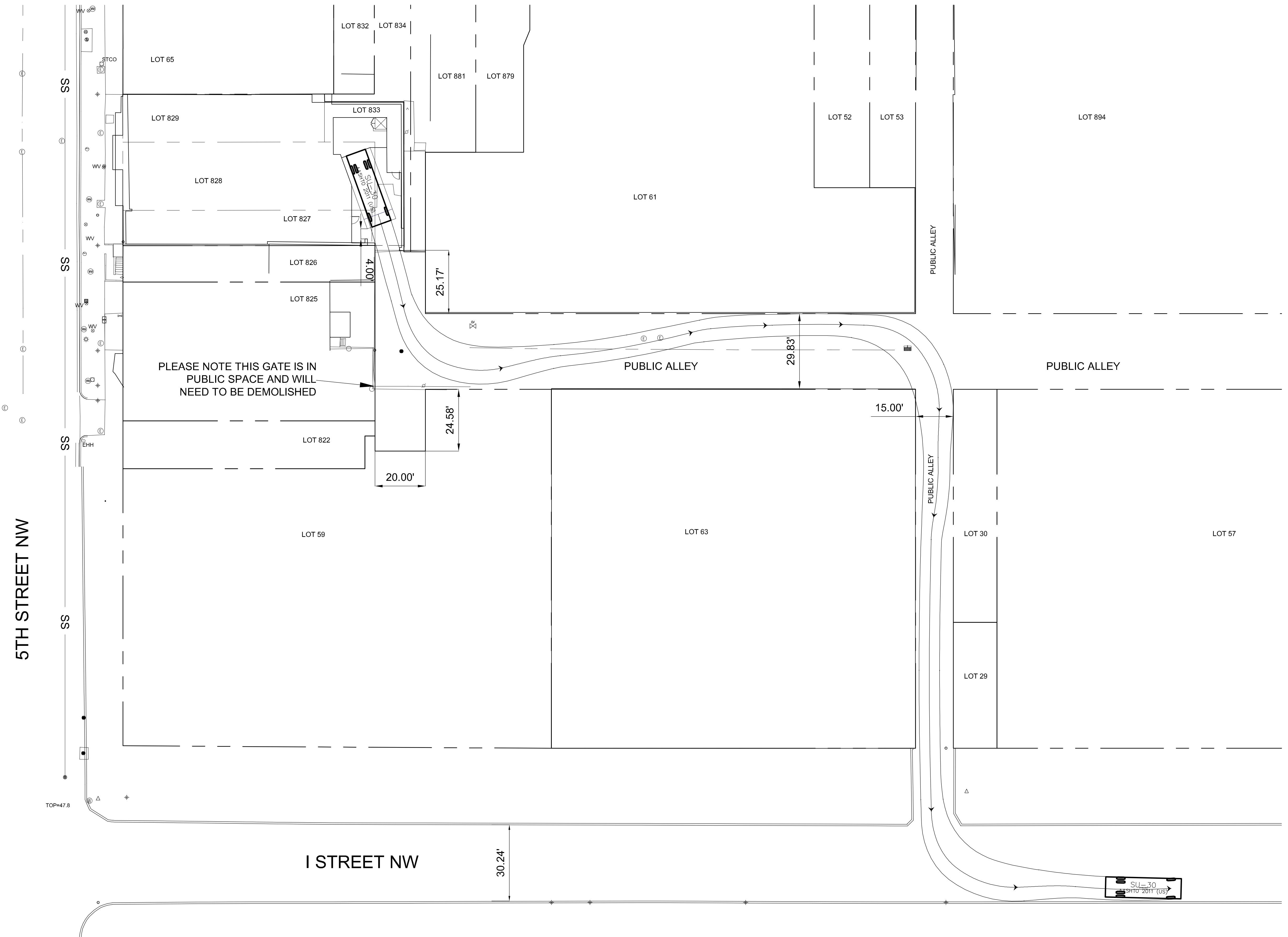
Owner	Developer	No.	To	Submissions Description	Date

SCALE: 1"=300'
DESIGN:
CHECKED:
DATE:

SQUARE 0516 / LOTS 828, 827, 829, & 833  
 925 5TH STREET, N.W.  
 WASHINGTON, DISTRICT OF COLUMBIA 20002  
 TRUCK TURNING TEMPLATE INBOUND



SU-30  
 WIDTH: 8'  
 TRACK: 8'  
 STEERING ANGLE: 31.8



NO.	DATE	SUBMITTALS/REVISIONS	BY

Civil Engineer  
**Dewberry**  
 2101 Gaither Road, Suite 340  
 Rockville Maryland 20850  
 Phone: (301) 337-2851 FAX: (301) 258-7607  
 Contact: C. Peter Okafor, PE, Associate Vice President

Owner	Developer

No.	To	Submissions Description	Date

SCALE: 1"=300'
DESIGN:
CHECKED:
DATE:


SQUARE 0516 / LOTS 828, 827, 829, & 833  
 925 5TH STREET, N.W.  
 WASHINGTON, DISTRICT OF COLUMBIA 20002  
 TRUCK TURNING TEMPLATE OUTBOUND  
 SHEET 1 OF 1